

# **PATCO** *Air Tools*

Manufacturer of Quality Air Tools and Components

[www.patcoairtools.com](http://www.patcoairtools.com)



## Die Grinders

### APPLICATIONS

These tools are very popular, all-purpose die grinders for applications such as deburring, die contouring, flash and removal, blending and smoothing. They are primarily used with carbide burrs and mounted points. Industries using the grinders include: metal fabrication shops, die shops, foundries, steel mills, shipyards, and construction.

### G-1340 & G-1340A SERIES

### G-1350 & G-1350A SERIES

- Rugged 1 HP motor
- 18,000 or 25,000 RPM
- Steel motor housing to withstand heavy use
- Double angle collet for extreme accuracy
- Motor parts interchangeable with other 1340/1350 tools
- Available in lightweight aluminum for overhead work or where a lighter tool is needed
- Interchangeable with CP-9113



**G-1340**



**G-1350**

Model Number	HP	RPM	Throttle	Collet Insert	OAL	Net Wt.	Housing	Air Inlet
G-1340 G-1340-18	.9	25,000 18,000	Safety	1/4" STD*	6 1/4"	2 1/4 lbs.	Steel	1/4" NPT
G-1340A G-1340A-18	.9	25,000 18,000	Safety	1/4" STD*	6 1/4"	1 1/2 lbs.	Aluminum	1/4" NPT
G-1350 G-1350-18	.9	25,000 18,000	Safety lock-off	1/4" STD*	6 1/2"	2 1/2 lbs.	Steel	1/4" NPT
G-1350A G-1350A-18	.9	25,000 18,000	Safety lock-off	1/4" STD*	6 1/2"	1 1/2 lbs.	Aluminum	1/4" NPT

\*Specify collet if other than standard 1/4" insert. Optional collet: 1/8", 3/16", 3/8", 23/64"

### STANDARD EQUIPMENT

#### G-1340 & G-1350 SERIES:

- G-3327 Wrench
- G-3858 Wrench
- G-3729 1/4" Collet

### OPTIONAL EQUIPMENT

- Various Collet Sizes
- G-4001 Motor tune-up kit
- G-3186-ASSM Drop in motor assembly (includes G-3256 shank)



**G-8649**

**NEW**

## Reduces Vibration

Ergonomic motor housing grip.

Fits both G-1340 and G-1350 motor housings.

Easily slides on to housing.



## G-3507 SERIES

- Rugged 1/3 HP motor
- 35,000 RPM
- Compact, lightweight, easy to handle
- Steel Motor housing-withstands rugged use
- Shown is optional lock-off lever throttle which prevents accidental tool start up
- Also available with 1/8" 300 series Double angle collet system



**G-3507**

Model Number	HP	RPM	Throttle	Collet	OAL	Net Wt.	Housing	Air Inlet
G-3507	.33	35,000	Self Close	1/4" 2 pc	5"	1 lb.	Steel	1/4" NPT
G-3503	.33	35,000	Self Close	1/8" 3 pc 300 Series DA Insert	5"	1 lb.	Steel	1/4" NPT
G-3504	.33	35,000	Self Close	1/4" 3 pc 300 Series DA Insert	5"	1 lb.	Steel	1/4" NPT

### STANDARD EQUIPMENT

G-3507:

- G-3858 Wrench
- GA-3653 Wrench

G-3503/G-3504:

- G-3856 Wrench
- G-3860 Wrench
- G-3503 - G-0318 1/8" Collet Insert
- G-3504 - G-0314 1/4" Collet Insert

### OPTIONAL EQUIPMENT

- G-0781-ASSM Drop-in Motor with G-0858 Collet Body

## Rear Exhaust Die Grinder

The RE-3175 rear exhaust grinder comes standard with directional exhaust deflector.

### RE-3175

- Rugged 1 HP motor
- 23,000 RPM
- Steel or aluminum housing
- Double angle collet for extreme accuracy

### STANDARD EQUIPMENT

- G-3327 Wrench
- G-3858 Wrench
- G-3729 1/4" Collet

### OPTIONAL EQUIPMENT

- 12" over hose assembly and 18" whip hose 1/4" NPT
- G-4001 Motor tune-up kit
- RE-3186-ASSM Drop in motor assembly (includes G-3256 shank)



**RE-3175**

Model Number	HP	RPM	Throttle	Collet Insert	OAL	Net Wt.	Housing	Air Inlet
RE-3175	.9	23,000	Self-close	1/4" STD*	6 1/2"	3 lbs.	Steel	1/4" NPT
RE-3175A	.9	23,000	Self-close	1/4" STD*	6 1/2"	2 1/4" lbs.	Aluminum	1/4" NPT

\*Specify collet if other than standard 1/4" insert. Optional collet: 1/8", 3/16", 3/8", 23/64"



Made In USA

Toll Free 1.800.727.2201 • 248.648.8830 • Fax: 248.648.8833 • [www.patcoairtools.com](http://www.patcoairtools.com)

**PATCO** Air Tools  
Manufacture of Quality Air Tools and Components



## Extended Die Grinders

### APPLICATIONS

These grinders are used with mounted points and carbide burrs for a variety of applications such as die construction and repair, weld cleaning, casting and forging clean-up, deburring, blending and smoothing. User industries include die shops, foundries, maintenance areas and fabrication shops.

### GE-1340-C & GE-1350-C SERIES

- Ideal for work in deep crevices or other recessed areas
- Double angle collet allows exceptional accuracy
- Adjustable side exhaust deflector
- Heavy duty steel housing
- Rugged 1 HP motor
- Motor parts interchangeable with 1340/1350 models
- Interchangeable with CP-9113ES

GE-1350-C



GE-1340-C



GE-1340-C-HD



### GE-HEAVY DUTY SERIES

Our extra heavy duty extended die grinder has been developed for applications where others have failed to perform. The extension assembly is designed to handle high side load pressures required in many hard to reach areas.

- Heavy duty 1 HP motor
- Double angle collet allows exceptional accuracy
- Available in steel or aluminum housing
- Side exhaust with adjustable deflector
- Interchangeable motor parts with all 1340 & 1350 series grinders

Model Number	HP	RPM	Throttle	Collet Insert	OAL	Net Wt.	Housing	Air Inlet
GE-1340-C GE-1340-C-HD	.9	25,000	Safety	1/4" STD*	11 1/4"	3 1/4 lbs.	Steel	1/4" NPT
GE-1340A-C GE-1340AC-HD	.9	25,000	Safety	1/4" STD*	11 1/4"	2 3/4 lbs.	Aluminum	1/4" NPT
GE-1350-C GE-1350-C-HD	.9	25,000	Safety lock-off	1/4" STD*	11 1/2"	3 1/2 lbs.	Steel	1/4" NPT
GE-1350A-C GE-1350A-C-HD	.9	25,000	Safety lock-off	1/4" STD*	11 1/2"	3 lbs.	Aluminum	1/4" NPT

\*Specify collet if other than standard 1/4" insert. Optional collet: 1/8", 3/16", 3/8", 23/64"

### STANDARD EQUIPMENT

- G-3729 1/4" Collet
- G-3327 Wrench
- G-3858 Wrench

### OPTIONAL EQUIPMENT

- Various collet sizes
- GE-4001 tune-up kit
- GE-3183-ASSM Drop in motor assembly (includes GE-3197 nut)
- GE-4001HD Heavy duty series tune-up kit





# Extended Wheel Grinders

## APPLICATIONS

These grinders are for weld smoothing, casting clean-up, and burr removal in fabrication shops, die shops, shipyards, power plants, refineries and many other industries.

## GE-CONE & PLUG WHEEL GRINDERS

Designed for hard-to-reach surfaces in die construction, castings, and forgings. Also excellent when an extended reach is needed for weld cleaning, deburring, blending and smoothing.

- Heavy duty 1 HP motor
- Available in steel or aluminum housing
- Interchangeable motor parts with all 1340 & 1350 series grinders



GE-1340-20

Model Number	HP	RPM	Throttle	Spindle	OAL	Net Wt.	Housing	Air Inlet
GE-1340-20 GE-1340HD-58-20	.9	20,000	Safety	3/8-24 5/8-11	11"	3 1/4 lbs.	Steel	1/4" NPT
GE-1340A-20	.9	20,000	Safety	3/8-24	11"	2 1/2 lbs.	Aluminum	1/4" NPT
GE-1350-20 GE-1350HD-58-20	.9	20,000	Safety lock-off	3/8-24 5/8-11	11 1/4"	3 1/2 lbs.	Steel	1/4" NPT
GE-1350A-20	.9	20,000	Safety lock-off	3/8-24	11 1/4"	2 3/4 lbs.	Aluminum	1/4" NPT

**IMPORTANT:** Grinding wheel RPM must exceed tool RPM rating. Never mount bonded grinding wheels. Always wear eye, face, and body protection. Use only reinforced Type 1 wheels, 3" and 4" diameter x 1/4" wide maximum x 3/8" center hole; wheels not included.

## GE-1340-W & GE-1350-W SERIES

- Heavy duty 1 HP motor, 18,000 RPM
- Extended housing for better reach and control
- Solid steel motor housing ensures longevity
- Interchangeable wheel guards-3" and 4"
- Side exhaust system directs exhaust away from work area
- Motor parts interchangeable with 1340/1350 tools
- Interchangeable with CP-3040-LANHUT/GANHUT
- Also available in aluminum housing



### STANDARD EQUIPMENT

- GE-3939 3" Wheel guard
- G-3327 Wrench
- G-3858 Wrench

### OPTIONAL EQUIPMENT

- GE-3764 4" Wheel guard
- GE-4001 tune-up kit
- GE-3183-ASSM Drop in motor assembly (includes GE-3197 nut)

Model Number	HP	RPM	Throttle	Wheel	OAL	Net Wt.	Housing	Air Inlet
GE-1340-W	.9	18,000	Safety	3"	12 1/2"	3 3/4 lbs.	Steel	1/4" NPT
GE-1340A-W	.9	18,000	Safety	3"	12 1/2"	3 lbs.	Aluminum	1/4" NPT
GE-1350-W	.9	18,000	Safety lock-off	3"	12 3/4"	4 lbs.	Steel	1/4" NPT
GE-1350A-W	.9	18,000	Safety lock-off	3"	12 3/4"	3 3/4 lbs.	Aluminum	1/4" NP

\*Use only reinforced Type 1 wheels. 3" diameter x 1/2" max width x 3/8" center hole; wheels not included. Available in 4" wheel capacity model. When ordering specify 4" wheel with -4, (i.e. GE 1340-W-4).

The -4 model uses only reinforced Type 1 wheels 4" diameter x 1/4" maximum width center hole; wheels not included.



Made In USA

Toll Free 1.800.727.2201 • 248.648.8830 • Fax: 248.648.8833 • [www.patcoairtools.com](http://www.patcoairtools.com)

**PATCO** Air Tools  
Manufacturer of Quality Air Tools and Components

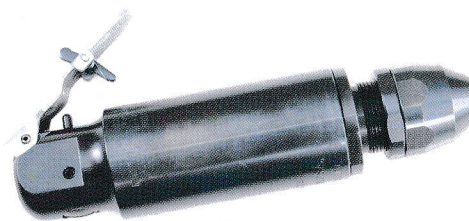


## APPLICATIONS

These routers are used for many applications such as cutting wood, trimming and cutting plastic parts, trimming flash from injection molded parts, window openings and various other uses.

### G-1340-CT3/G-1350-CT3 LAMINATE CUTTER GR-2510/GR-1810 ROUTERS

- Powerful 1 HP motor
- Double angle collet for extreme accuracy
- Laminate cutter has 3" nylon plate to protect work surface
- Interchangeable motor parts with all 1340 & 1350 series grinders
- Steel or aluminum housing



GR-2510

Model Number	HP	RPM	Throttle	Collect Insert	OAL	Net Wt.	Housing	Air Inlet
GR-2510	.9	25,000	Safety	1/4" STD	6 1/4"	3 1/4 lbs.	Steel	1/4" NPT
GR-1810		18,000						
GR-2510A	.9	25,000	Safety	1/4" STD	6 1/4"	2 1/2 lbs.	Aluminum	1/4" NPT
GR-1810A		18,000						
G-1340-CT	.9	25,000	Safety	1/4" STD	6 1/4"	2 1/2 lbs.	Steel	1/4" NPT
G-1350-CT			Safety lock-off					
G-1340A-CT	.9	25,000	Safety	1/4" STD	6 1/4"	1 1/2 lbs.	Aluminum	1/4" NPT
G-1350A-CT			Safety lock-off					

\*G-1340-CT/G-1350-CT specify collet insert if other than standard 1/4", optional 1/8", 3/16", 23/64"

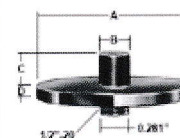
#### STANDARD EQUIPMENT

- G-3729 1/4" Collet
- G-3327 Wrench
- G-3858 Wrench

#### OPTIONAL EQUIPMENT

- Router guide GR-2402, dimensions A-1"; B-3/8"; C-3/8"; D-1/8"
- Special router guide sizes available
- G-4001 motor tune-up kit
- G-3186-ASSM drop in motor assembly w/G-3256 shank
- GR-2180 Router head assembly
- G-3733-Replacement 3" plate w/screws

#### ROUTER GUIDE



### G-1340-1 CUT-OFF TOOLS

The very popular G-1340 style tool is now available in a cut-off wheel design.

- Heavy duty 1 HP motor
- Interchangeable motor parts with all 1340 & 1350 series grinders
- Steel or aluminum housing
- Specify 4" guard G-1340-1-4 when ordering



G-1340-1

Model Number	HP	RPM	Throttle	Wheel	OAL	Net Wt.	Housing	Air Inlet
G-1340-1	.9	25,000	Safety	3" or 4"	6 3/4"	2 1/2 lbs.	Steel	1/4" NPT
G-1340A-1	.9	25,000	Safety	3" or 4"	6 3/4"	1 3/4 lbs.	Aluminum	1/4" NPT
G-1350-1	.9	25,000	Safety lock-off	3" or 4"	7"	2 3/4 lbs.	Steel	1/4" NPT
G-1350A-1	.9	25,000	Safety lock-off	3" or 4"	7"	2 lbs.	Aluminum	1/4" NPT

**IMPORTANT:** Grinding wheel RPM must exceed tool RPM rating. Never mount bonded grinding wheels. Always wear eye, face, and body protection. Use only reinforced Type 1 wheels, 3" and 4" diameter x 1/4" wide maximum x 3/8" center hole; wheels not included.

#### STANDARD EQUIPMENT

- GA-3480 3" Wheel guard
- G-3858 Wrenches (2)
- GA-3588-1 wheel nut

#### OPTIONAL EQUIPMENT

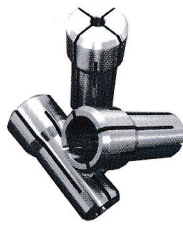
- GA-3500 4" Wheel guard
- G-4001 Motor tune-up kit
- G-3183-ASSM drop in motor assembly



## Double Angle (DA) Collets

### 200 SERIES

Model Number	Size
G-4158	1/8"
G-4159	3/16"
G-3729	1/4"
G-3375	3/8"
G-4164	23/64"



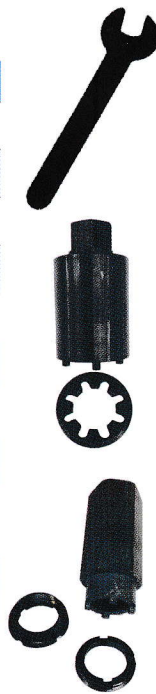
### 300 SERIES

Model Number	Size
G-0318	1/8"
G-0314	1/4"

\*Other sizes available upon request

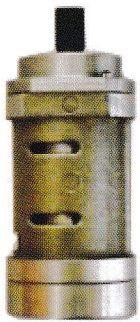
## Wrenches and Special Tools

Model Number	Size
G-3856	7/16"
G-3857	1/2"
G-3858	9/16"
GA-3653	5/8"
G-3860	11/16"
G-3327	3/4"
GA-3651	Spanner
GA-3652	Spanner
G-3900 Removes G-3187 motor nut	Motor Nut Removal Tool
GA-3901 Removes GA-3487/GA-3489	Angle head Nut Removal Tool



## Drop In Motor Assemblies

Reduce downtime with drop in replacement motor assemblies.



**G-3183-ASSM**  
shown

Model Number		Model
G-0781-ASSM	Includes G-0858 collet body	G-3507
G-3186-ASSM	Includes G-3256 collet shank	G-1340-, G-1350-, GR-2510, GR-1810
G-3183-ASSM	Motor only	GA-11625, GA-11650
GE-3183-ASSM	Includes GE-3197 rotor nut	GE-1340-, GE-1350-
GA-3183-ASSM	Includes GA-3490 coupling	GA-1340-, GAL-1340-, GA-1350-, GAL-1350-
RE-3186-ASSM	Includes G-3256 collet shank	RE-3175-, RER-3175-

## Repair Kits

Model Number	Description	Models
G-4001	Motor tune-up kit	All Patco grinders except G-3507
GE-4001	Extended die grinder repair kit	GE- Ext. die grinders
GE-4001HD	Heavy Duty Ext. die grinder repair kit	GE-HD Heavy duty Ext. die grinders

## Replacement Guards

Model Number	SIZE and Tool Model
GE-3939	3" Type 1 guard for GE- ext wheel grinders
GE-3764	4" Type 1 guard for GE- ext wheel grinders
GA-3480	3" Type 1 Guard for G-1340-1
GA-3500	4" Guard for G-1340-1



## Screened Inlet Bushing



Model Number	Size
9555	1/4" MPT x 1/4" FPT
P-1438	1/4" MPT x 3/8" FPT
9553	3/8" MPT x 1/4" FPT

Model Number	Size
P-3838	3/8" MPT x 3/8" FPT
P-3812	3/8" MPT x 1/2" FPT
P-1238	1/2" MPT x 3/8" FPT
P-1212	1/2" MPT x 1/2" FPT



## Notes

## Patco Air Tools Warranty and Terms

### WARRANTY

All **PATCO Air Tools, Inc.** pneumatic power tools are rigorously inspected and performance tested in our factory before shipping to our customers. If an inherent defect is found during normal use and service, **PATCO Air Tools, Inc.** will warrant this tool against defects in workmanship and materials for the first year of the tool. In the instances **PATCO Air Tools, Inc.** tools develops a performance problem, simply return the tool, transportation prepaid with your name, address and dated proof of purchase, along with a brief explanation of the defect. Upon examination and review at our factory, **PATCO Air Tools, Inc.** shall confirm that the tool qualifies for warranty status, and will repair or replace the tool at no charge to the customer. This warranty constitutes the entire obligation of **PATCO Air Tools, Inc.** relating to the sale of such product and its maximum liability is limited to the purchase price of such product. In no event shall **PATCO Air Tools, Inc.** be held liable for incidental, indirect, consequential or special damage of any kind arising from the sale or use of such product.

All parts considered wearable parts and products are NOT covered under this warranty. Examples of wearable items include, but not limited to bearings, contact wheels, rotor blades, regulators, valve stems, levers, shrouds, guards, O-rings, seals and gaskets.

**PATCO Air Tools, Inc.'s** warranty policy is contingent upon proper use of our tools in accordance with factory recommendations, instructions, and safety practices. It shall not apply to equipment that has been subjected to misuse, negligence, accident or tampering in any way so as to affect its normal performance.

### MERCHANDISE RETURNS

All returns must receive prior approval from **PATCO Air Tools, Inc.** and display a Returned Merchandise Authorization number. All authorized returns will receive credit upon validation as new merchandise in saleable condition. No merchandise will be authorized for return if used, abused, or modified in any way, unless under the terms of warranty. All returns are subject to a 20% restocking fee.

### CREDIT TERMS

Upon credit approval, all new accounts are subject to credit terms of net 30 with no interest. Any accounts 31 days in arrears are subject to credit watch, and any accounts 45 days in arrears will be placed on credit hold.

### MINIMUM ORDERS

All orders are subject to a \$30 net minimum. No order will be invoiced for less than \$30.



100 Engelwood Drive, Suite G • Orion, MI 48359  
**Toll Free 1.800.727.2201 • 248.648.8830**  
**Fax: 248.648.8833 • [www.patcoairtools.com](http://www.patcoairtools.com)**